

Client
Synaptide

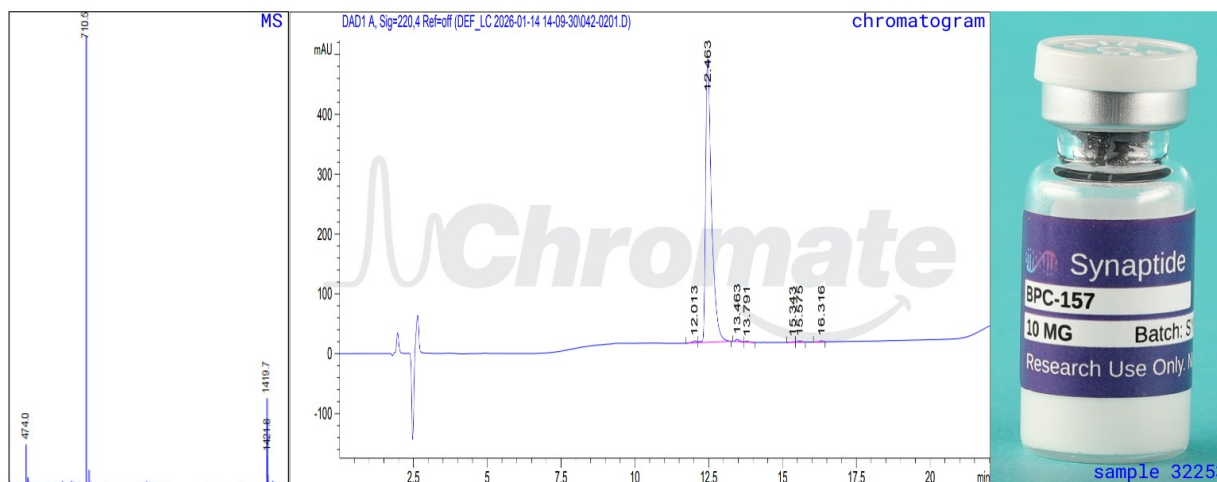
Sample received: **01/13/26**
Analysis conducted: **01/18/26**

Product:	BPC-157 10mg
Batch:	SYNBPC10-0001
Appearance:	Lyophilized peptide vial

Qualitative and quantitative chemical analysis by LCMS

Results

Identity:	BPC-157
Quantity:	11.08mg
Purity:	98.284%
Metals:	< 100 ppb
Mol. Wt. (MS):	1418.7



Lucas Weber
Lucas Weber
Principal Chemist

report #32253
access code AE4PR4538S2D
chromate.org/verify
produced 02/14/26

