

Client  
**Synptide**

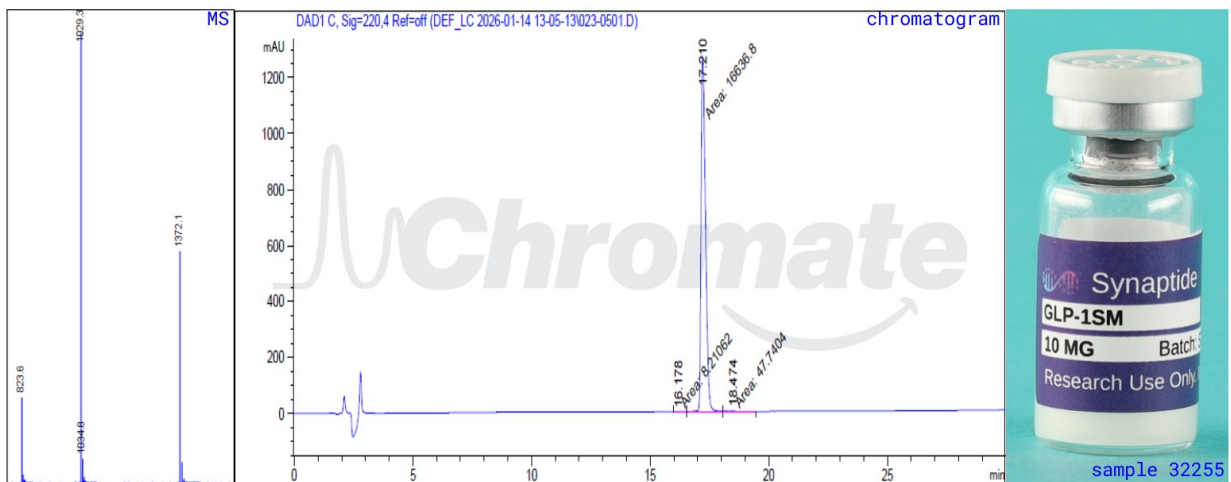
Sample received: **01/13/26**  
Analysis conducted: **01/18/26**

Product:	GLP-1SM 10 mg
Batch:	SYNSM10-0001
Appearance:	Lyophilized peptide vial

### Qualitative and quantitative chemical analysis by LCMS

### Results

Identity:	Semaglutide
Quantity:	9.043mg
Purity:	99.665%
Metals:	< 100 ppb
Mol. Wt. (MS):	4113.3



*Lucas Weber*  
Lucas Weber  
Principal Chemist

report #32255  
access code **8CBUT2ZGE49F**  
[chromate.org/verify](http://chromate.org/verify)  
produced **02/14/26**

